

3,716 sf Building Manatee Av W

2715 Manatee Ave W, Bradenton, FL 34205



Listing ID: 30425952
Status: Active
Property Type: Retail-Commercial For Sale
Retail-Commercial Type: Day Care Facility, Free-Standing Building
Size: 3,716 SF
Sale Price: \$485,000
Unit Price: \$130.52 PSF
Sale Terms: Cash to Seller



Overview/Comments

Great Location on Manatee Avenue West, 3,716 sf Building, built in 1920s, City of Bradenton, Zoning District is UCC (Urban Commercial Corridor) permitted uses include: Business Services, Office, Café, Secondhand Stores, Veterinarian/Animal Hospital, etc.. Allowable Uses requiring a Special Use Permit include: Restaurant, Building Materials, Construction Services, etc.. 3 Restrooms, Triple Commercial Sink, and Walk-In Cooler, Upstairs 2 Rooms, and a Bathroom with Fixtures removed. 26x24 CB/Stucco Garage, 1/2 has ac; Lot Size 112x190 (0.49 ac), 20 Parking Spaces, New Roof in 2019; Exterior Painting scheduled for June. Easy to Show, A Must See! Sold As Is!

More Information Online

<http://www.mfcree.com/listing/30425952>



QR Code

Scan this image with your mobile device:

General Information

Taxing Authority:	City of Bradenton	Property Use Type:	Vacant/Owner-User
Tax ID/APN:	3540700006	Building Name:	f/k/a Flowers by Don & Latte Luna
Retail-Commercial Type:	Day Care Facility, Free-Standing Building, Mixed Use, Restaurant, Other	Building/Unit Size (RSF):	3,716 SF
Zoning:	UCC (URBAN COMMERCIAL CORRIDOR)	Land Area:	0.49 Acres
		Sale Terms:	Cash to Seller

Area & Location

Retail Clientele:	Business	Feet of Frontage:	112
Largest Nearby Street:	Fronts Manatee Av W (SR 64)	Highway Access:	Yes - SR 64

Building Related

Total Number of Buildings:	2	Exterior Description:	Main Building is Wood Frame built in 1920s; Garage is CB/Stucco built in 1999.
Property Condition:	Good	Total Parking Spaces:	20
Year Built:	1920	Parking Type:	Surface
Roof Type:	Gable	Passenger Elevators:	0
Construction/Siding:	Wood Frame	Freight Elevators:	0

Land Related

Zoning Description:	UCC - City of Bradenton	Water Service:	Municipal
Lot Frontage:	112	Sewer Type:	Municipal
Lot Depth:	190		

Location

Address: 2715 Manatee Ave W, Bradenton, FL 34205
County: Manatee
MSA: North Port-Sarasota-Bradenton



Property Images



Exterior 002



Exterior 003



Parking



2715 Manatee Av W 001



Parking Lot



2715 Manatee Av W 002



24x26 Garage



2715 Manatee Av W 003



2715 Manatee Av W 004



2715 Manatee Av W 007



2715 Manatee Av W 005



2715 Manatee Av W 008



2715 Manatee Av W 006



2715 Manatee Av W 009



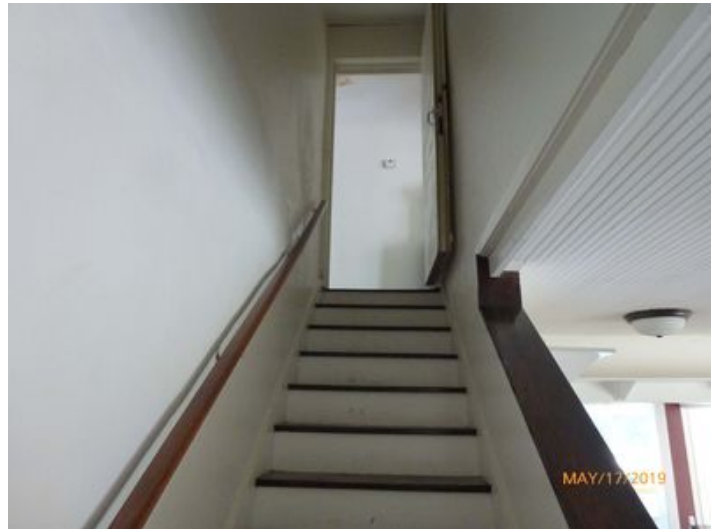
2715 Manatee Av W 010



2715 Manatee Av W 013



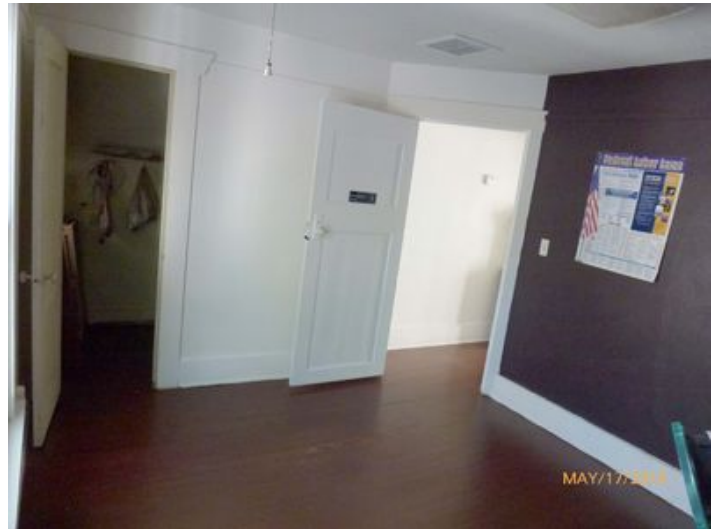
2715 Manatee Av W 011



2715 Manatee Av W 014



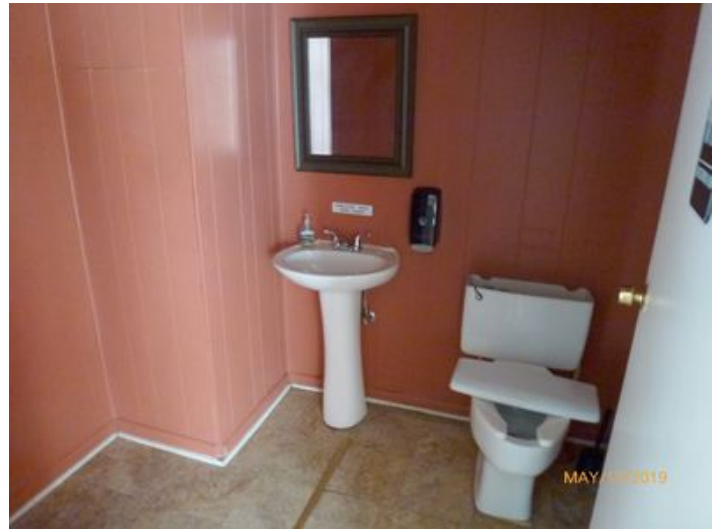
2715 Manatee Av W 012



2715 Manatee Av W 015



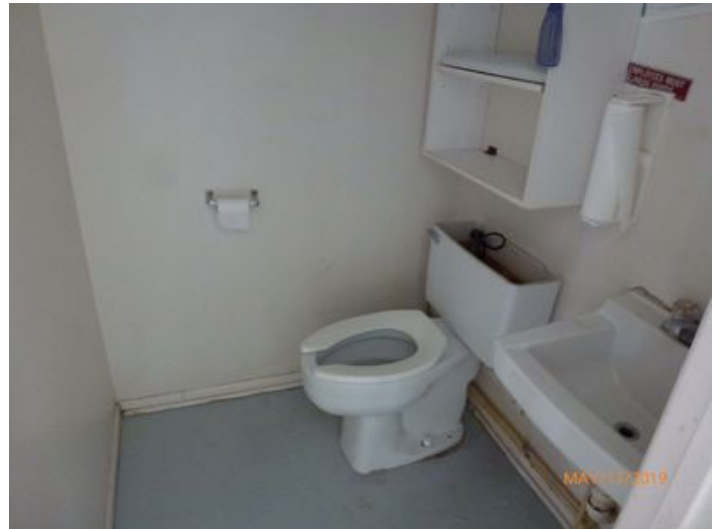
2715 Manatee Av W 016



2715 Manatee Av W 019



2715 Manatee Av W 017



2715 Manatee Av W 020



2715 Manatee Av W 018



2715 Manatee Av W 021

Property Contacts



Don A Lewis

RE/MAX ALLIANCE GROUP

941-920-3919 [M]

941-920-3919 [O]

DonLewis@remax.net